

Republic of Yemen
Prime Ministry
Executive Unit for IDPs Camp
Marib Governorate



SEMI-ANNUAL
REPORT
JANUARY-JUNE
2022

Issued By Executive Unit for IDPs Camp – Marib Governorate



info@exu-marib.com



<https://www.exu-marib.com>





Ex.U.IDPs

**SEMI-ANNUAL
REPORT**

JANUARY-JUNE

**Executive Unit for IDPs Camp
Marib Governorate**

2022

Republic of Yemen - Marib Governorate Map





Index

Contents	Page Number
Strategic Building of the Executive Unit	5
Introduction	6
Manager's Speech	7
Administrative Structure	8
Sectors, Camps and Districts Structure	9
Marib Governorate - Statistics and Figures	10
Executive Unit Activities	11
Displacement in Ma'rib Governorate	12
Emergency	14
New Displacement	16
Humanitarian Needs	19
Partners Interventions	28
Challenges	37
Recommendations	38
Media Supplement	41
Conclusion	47



Strategic Building of the Executive Unit

The Vision

Professionalism in dealing with displacement and managing displacement camps in accordance with national and international standards.

Mission

An integrated and effective response to displacement in Yemen that emphasizes the rights of IDPs and the responsibilities of the authorities towards them based on transparency, accountability and confidentiality to ensure the provision of high-quality services.

Strategic goals of Executive Unit

The Executive Unit hope to more professional and more developed administrative body to address displacement and camps management in accordance with international standards and in line with the requirements of national visions and policies. The unit's strategic objectives are embodied in accordance with the national policy to address internal displacement in the Republic of Yemen as follows:

- Protect civilians from involuntary displacement and prepare for any possible displacement.
- Protect and assist IDPs during displacement and support communities affected by displacement.
- Create appropriate conditions for safe, voluntary and durable solutions to displacement.

Valus

Executive Unit for IDPs Camp believes in and is committed to performing its duties in accordance with the following values:

Transparency

Availability of all information about regulations and statistics on displacement, camps, IDPs, humanitarian aid of all kinds and forms, intervening organizations, and facilitating access to information.

Responsibility & Accountability

The Executive Unit is actively committed to placing all its leaders and employees at all levels in accountability to society Ensure the quality of the response and provide relevant results, acknowledge any failures or errors that occur while doing so and take full responsibility.

Confidentiality of personal data

Confidentiality of personal data: The Executive Unit ensures that the personal data of the displaced that has been collected by the unit is kept confidential, and that it is not published or enabled by any party to access it except with the consent of the IDPs.

Quality

It is a set of characteristics and specifications that characterize the services provided by the executive unit to the displaced, and that meet the expressed and implicit desires and requirements of stakeholders in the appropriate time and form.

Introduction

Through the semi-annual report for the year 2022, Executive Unit for IDPs camps management in Marib governorate plays a prominent humanitarian role through the humanitarian activities and efforts made by the Executive Unit in all humanitarian operations for humanitarian and relief work in the governorate. The Executive Unit and its staff have faced many challenges and great pressures in addressing the issues of internal displacement and forced displacement. Especially with the exceptional circumstances in the governorate, which are extremely sensitive in terms of services and fragile infrastructure, and the accompanying waves and flows of the continuous movement of displacement in a large and unprecedented way, which led to great pressure on the already meager basic services, and the Executive unit was able to reach all the displaced in the governorate and coordinate interventions and arrange their situation and conditions, conducting surveys and assessments for all needs, sitting with all humanitarian partners from local and international organizations and institutions, providing all information support, arranging and facilitating urgent and safe access to all affected communities and the sites and gatherings of the displaced.

Executive unit contributed to introducing the humanitarian situation through meetings, reports, humanitarian appeals and emergency messages to humanitarian and relief agencies, clarifying the humanitarian file, needs and challenges in the audio-visual media, and mobilizing all efforts to provide life-saving humanitarian services, in addition to the coordination, facilitation and cooperation of Executive unit in this regard. Great in covering the needs and filling the humanitarian gaps in all sectors.

A number of challenges and major obstacles faced by Marib Governorate and the emergency situation that the governorate is constantly facing, displacement movement, pressure on services, and the lack of adequate humanitarian supplies due to the violations caused by the terrorist Houthi group and the accompanying displacement, mass displacement and double suffering have made all of us at the head of the humanitarian responsibility. In which we work with every effort and responsibility, and the humanitarian partners in the governorate, whom we thank for their provision of humanitarian projects and assistance, which helped alleviate the suffering and tragedy of the displaced.

However, we must work in the remainder of our current year 2022 to mobilize all capabilities and redouble efforts to cover the gap in the basic needs of the displaced families in the Marib Governorate.

Manager's Speech



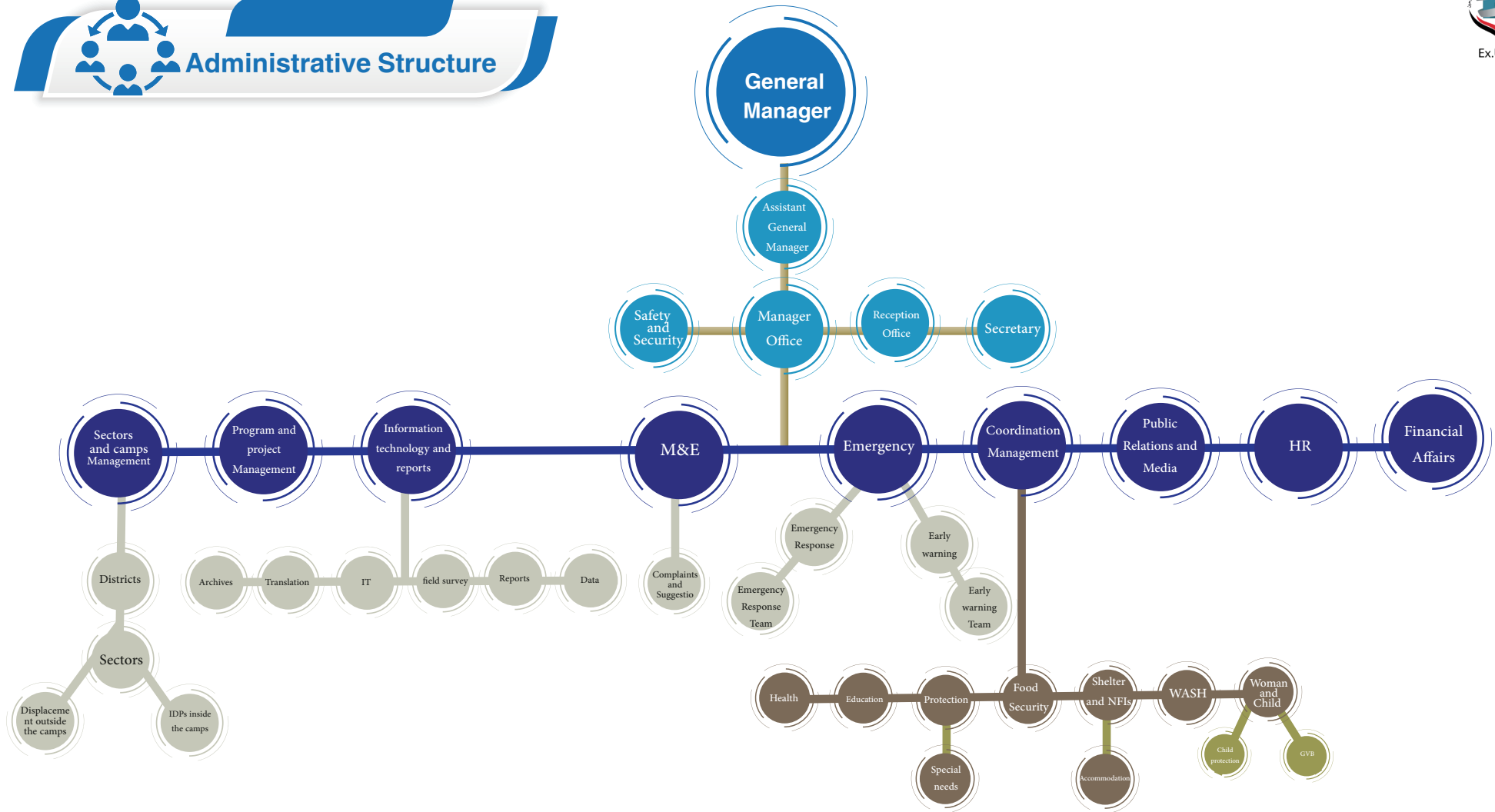
Saif Muthanaa
General Manager

The Executive Unit for IDPs Camps Management in Marib Governorate is working during the first half of this year 2022 with all efforts to make the humanitarian operation in Marib Governorate a success, as a result of the emergency and exceptional circumstances that the governorate has been experiencing during the past years due to the systematic process and the continuous escalation and violations that the terrorist Houthi has practiced against those who live in the governorate are displaced people and a host community, and the bitter humanitarian reality that it has created exceeds the capabilities of the local authority, but we, with every effort and determination and under the generous patronage of Major General / Sultan Al-Arada, Vice Chairman of the Presidential Leadership Council - the Governor of the governorate, may God protect him and with us all sectors and official offices we worked to mobilize efforts and work The necessary arrangements to overcome part of the severity of the gaps and humanitarian needs in light of the continuation of the emergency waves of displacement, In which we worked with patience and dedication with all Executive unit's workers to carry out the monitoring, tracking and registration process for all the displaced families, and we showed the difficult humanitarian conditions in the governorate, and the support and assistance required by all partners and humanitarian workers inside and outside the governorate, and the Executive unit was throughout the time the link between Organizations and families in need through communication, continuous facilitation, providing the necessary assistance, and raising needs first-hand. In addition, Executive unit undertakes the process of arranging the management of sectors, sites and displacement camps, appointing male and female community committees, building and raising the capacities of field workers, holding many periodic meetings and coordination meetings to ensure understanding of humanitarian work standards and accomplishing many field work in sites and camps for displaced persons. Providing all aspects of coordination and facilitation to all humanitarian partners in the governorate.

As we review the semi-annual performance report for our current year 2022, we would like to extend our thanks and appreciation to all those who contributed and helped in the success of our work from official and civil bodies and local and international organizations, and thanks are extended to all employees of the Executive unit in the office and the management of sectors, sites and camps, who made all their efforts and time in order to the success of the humanitarian mission entrusted to us all. In the remainder of our current year 2022, we hope from all humanitarian partners, local and international to provide a lot of humanitarian support, redouble efforts, and keep pace with everything that leads to excellence and upgrading our humanitarian work, administratively and on the ground to help and save the lives of thousands of displaced families in the governorate.

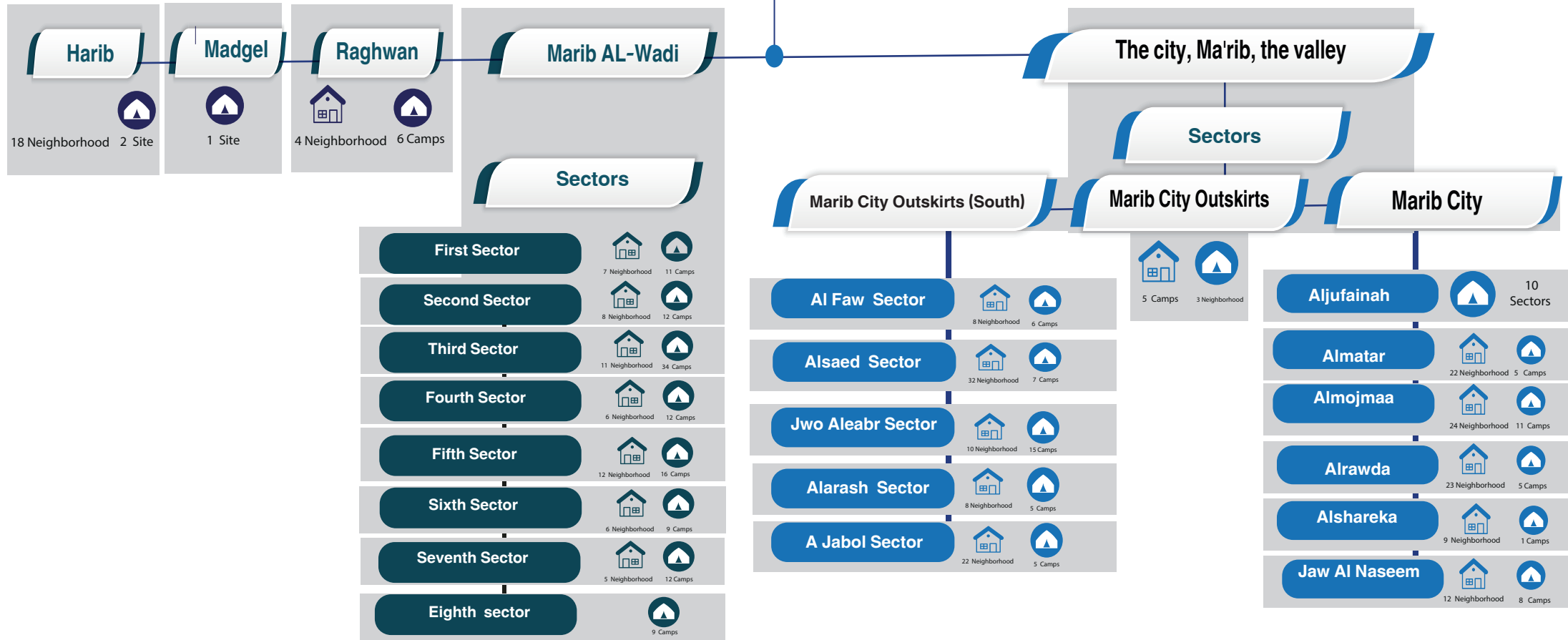


Administrative Structure



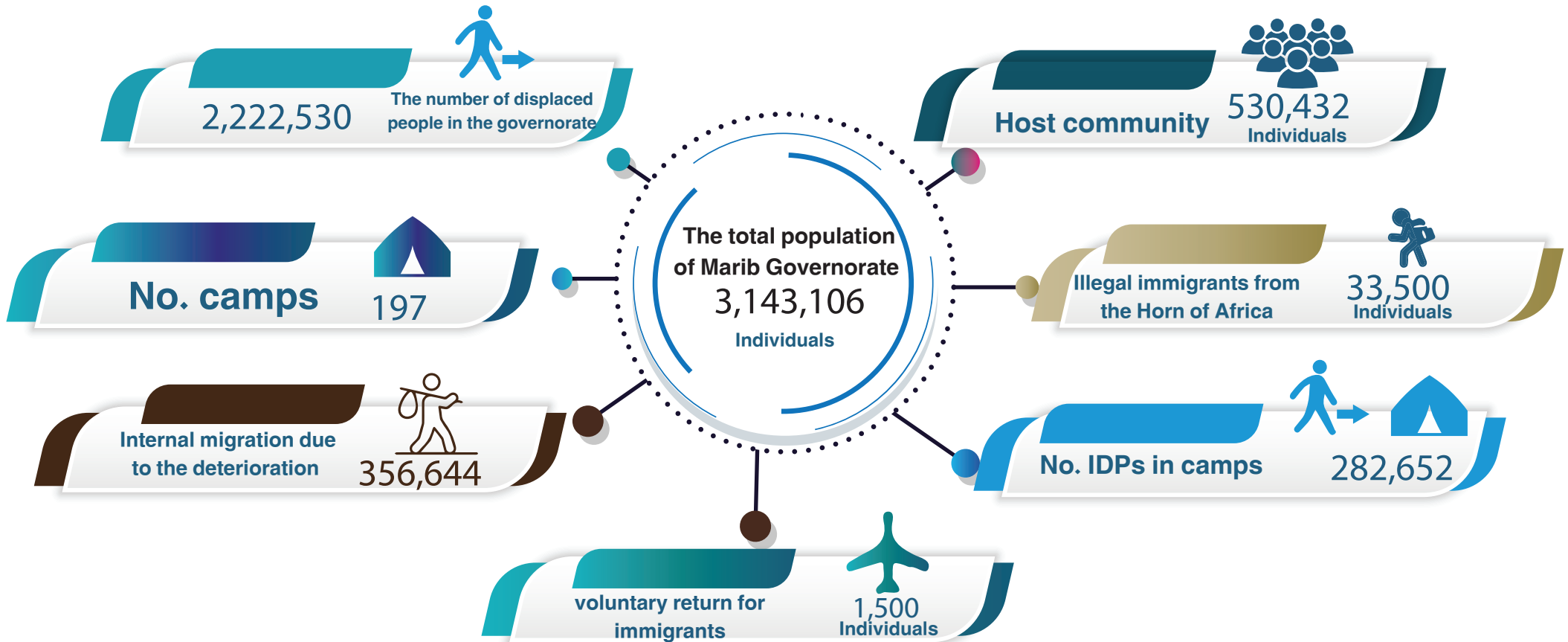
Structure of Sectors, Camps and Districts

Department of sectors and camps



Marib Governorate

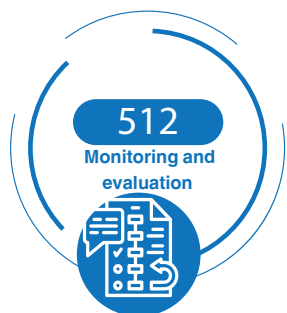
Statistics and Numbers

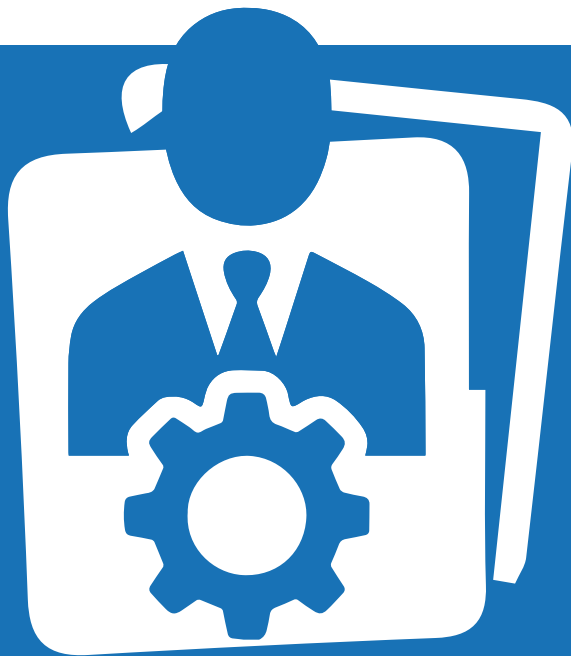


■ Source of information from official offices :
(statistics - planning - executive unit in the governorate)

Executive Unit

Activities JANUARY-JUNE





Institutional Building



Institutional Building

The Executive Unit for IDPs camps management in the governorate pays great attention to the process of rehabilitating and developing the capabilities of humanitarian workers, whether in the management of the office and the management of sectors, sites and camps because of this approach of great importance in aiming and correcting the process of managing the humanitarian file and in line with the size of the responsibility entrusted to us, especially since the Marib governorate hosts Approximately 62% of the total displacement in the Republic of Yemen.

The Executive unit also embarked in this field on organizing and developing administrative and technical capabilities and introducing standards and mechanisms of humanitarian work in all departments, in addition to continuing training a team of volunteers working in the fields of survey, evaluation, coordination, verification and data collection for service beneficiaries in an effective and efficient manner that reflects the Executive unit's belief in its humanitarian and moral duties, towards all The tasks assigned to Executive unit office through a package of activities and programs accompanying the process of Institutional Building and upgrading, the most important of which are as follows:





Emergency



Emergency department

Within the framework of the humanitarian efforts of the Executive Unit for IDPs Camps Management , and as a result of the emergency effects in the path of humanitarian action, the Executive unit worked to establish a special emergency department, which aims to provide emergency coordination services and facilitate the partners' response mechanism to accidents and disasters for affected families, especially with the high incidence of fires in the camps, which caused Lots of human and material losses.

And it created a painful humanitarian situation, in addition to the climatic changes that the governorate is witnessing, and the disasters it has left behind from floods, rain, storms and winds, which required the Executive unit to create this department to deal with these phenomena, monitor them, track them and assess their conditions, and the participation of the local authority and humanitarian agencies in all these emergency assessments.



58

fire case



families 380

Evictions



2,490

Families affected by the wind



13,609

Families affected by rain





New Displacement 2022



New Displacement

JANUARY-JUNE
2022



The displacement movement from those areas to Marib Governorate continues after the conditions of these families have deteriorated due to intransigence, illegal pursuits, child recruitment and violations practiced by militias in their areas of control. Dozens of families flock to search for safety, housing, freedom and a peaceful life. The Executive Unit is in the process of tracking the new displacement, monitoring and evaluating their needs, coordinating with humanitarian agencies and sub-clusters, and sending statements containing data of newly displaced families to ensure their protection, provide basic humanitarian services, and strive to provide them with a decent life.

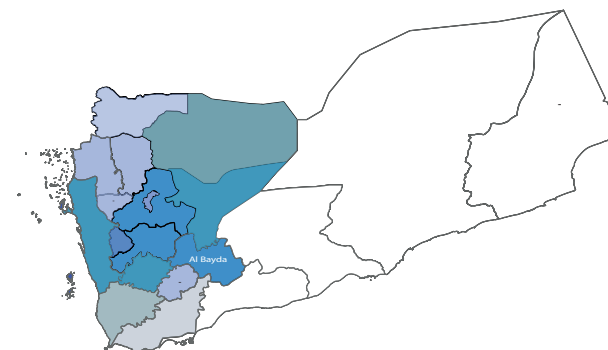


New Displacement
2022

1,572



9,538



The governorates of origin of



Governorate	Percentage	Number of Families
Marib	46.6%	724
Al Jawf	17.2%	264
Ibb	5.6%	89
Al Hudaydah	4.6%	77
Dhamar	4.1%	67
Sana'a	3.9%	63
Raimh	3.5%	55
Shabwa	3.0%	49
Taiz	2.9%	48
Hajjah	2.8%	42
Al Bayda	2.0%	32
Amran	1.2%	21
Amanat Al Asimah	1.1%	18
Al -Dhale	0.5%	7
Al -Mahwit	0.5%	7
Saada	0.3%	4
Lahj	0.2%	3
Al-Mahrah	0.1%	1
Hadramawt	0.1%	1

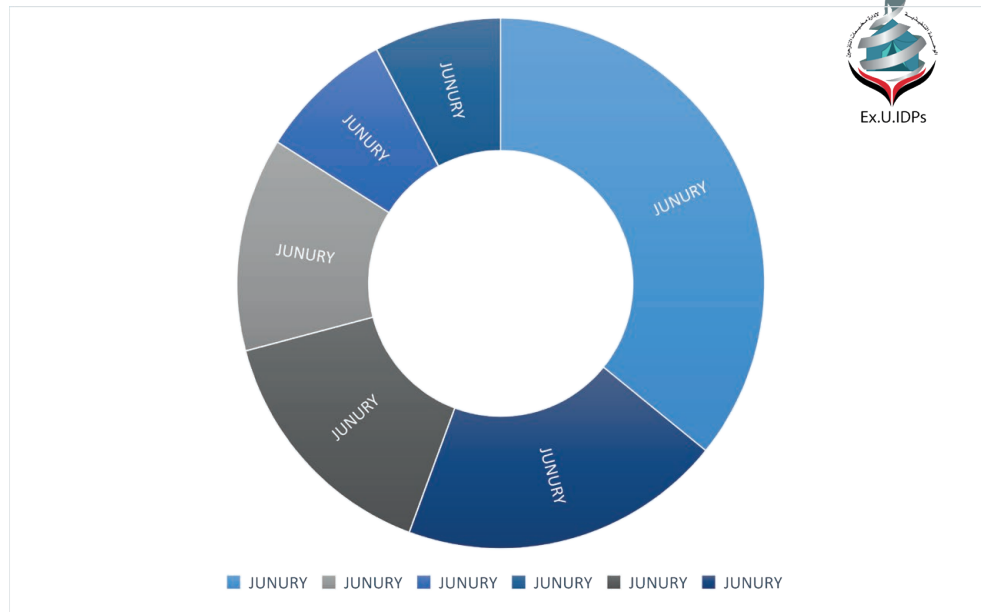


New displacement dashboard

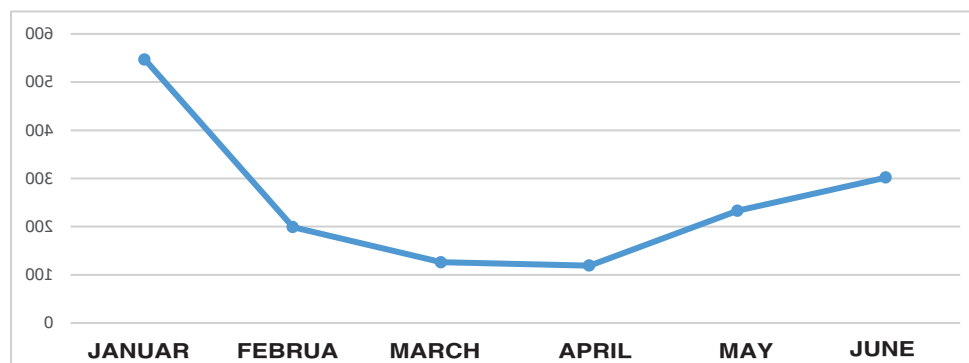
JANUARY-JUNE

2022

Month	Areas of Origin	No. people	No. families	Current areas
JANUAR	all Governor	4,112	557	:Directorates Marib City Marib Harib
FEBRUA		997	189	
MARCH		692	126	
APRIL		717	164	
MAY		1301	233	
JUNE		1719	304	
Total		9,538	1,573	



Monthly increase in the number of displaced people (January - June)





Humanitarian Needs



Ex.U.IDPs





Urgent Needs in Rapid Response

Emergency response and provision of urgent humanitarian aid to newly displaced families.

Providing life-saving interventions for newly displaced families in all humanitarian fields.



Emergency Recommendations in quick Response

Expansion of partners with an increase in working teams to facilitate and speed up the emergency response process

Opening an office for the United Nations Population Fund (UNFPA) in the governorate.

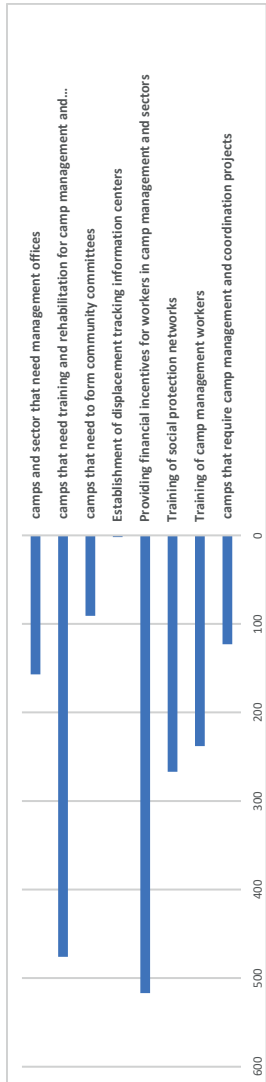
Creating an emergency stockpile to cover the ongoing need for displacement and to facilitate the exchange mechanism.

Rapid response to new displaced families and covering their needs.

Improving the quality of the contents of the emergency bag and selecting better samples due to the poor quality of some materials.



Emergency needs in CCCM sector



Emergency needs in CCCM sector

camps and sector that need management offices	camps that need training and rehabilitation for camp management and community committees	camps that need to form community committees	Establishment of displacement tracking information centers	Providing financial incentives for workers in camp management and sectors	Training of social protection networks	Training of camp management workers	camps that require camp management and coordination projects
157 Office	476 Volunteer	91 Site	2 Center	517 Volunteer	267 Member	238 Volunteer	123 Site



Emergency recommendations CCCM Sector

- Expansion and approval of camp management and coordination in locations where there are no CCCM partners .
- Training, rehabilitation and capacity building of workers in sectors and camps management.
- Providing incentives for camp management workers.
- Establishing an information center to track displacement in the governorate.
- Establishing community centers in sectors and camps.

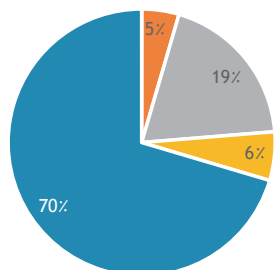


Emergency needs in the Shelter and Non-Food Items Sector

Emergency needs in the Shelter and Non-Food Items Sector

Shelter & NFIs	Shelter Needs Maintenance	Transitional Shelter	emergency shelter	Rentals
92,913 Family	11,276 Family	46,754 Family	8,620 Family	42,615 Family

Emergency needs in the Shelter and Non-Food Items Sector



- Rentals
- emergency shelter
- Transitional Shelter
- Shelter Needs Maintenance
- Shelter & NFIs



Emergency recommendations in the Shelter and Non-Food Items Sector

The necessity of providing adequate assistance to cover the basic precautions for the camp residents, including shelter .

Finding an appropriate mechanism to deal with emergency incidents in the camps, such as fires - floods, and rapid response to them.and Non-Food Items, in accordance with the climatic and social conditions of the province.

Urgent response and provision of humanitarian aid to displaced families living in rented houses.

Going on two tracks and providing sustainable and emergency shelter needs.

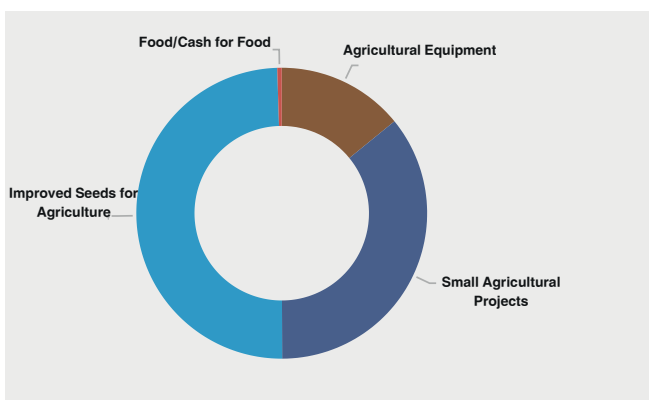
The speed of the transition to the transitional shelter, since most families suffer from housing in emergency shelters, which are not suitable for the climatic conditions in the governorate, and most families have had two years of suffering



Emergency needs in the Shelter and Non-Food Items Sector

Emergency needs in the Shelter and Non-Food Items Sector

Small Agricultural Projects	Agricultural Equipment	Improved Seeds for Agriculture	Food/Cash for Food
6,253 Family	2,463 Family	8,646 Family	86,422 Family



Emergency recommendations in the food and agricultural sector

Working to meet the gaps and needs in the field of food and agriculture, and work to quickly include displaced families who did not receive food in the monthly food quotas of the World Food Program.==

Working on adopting income-generating projects that help the displaced to provide food security on self-reliance.

The importance of considering the components of the monthly food ration provided by the World Food Program and taking into account the actual and appropriate need for the family's needs of varied and sufficient food.

Using the voucher method for monthly food rations, so that the family has the freedom to choose the materials from the merchant for the amount specified by the donor.

Going on two tracks to provide emergency and sustainable needs in the agricultural sector.



Emergency needs in the WASH sector

Emergency needs in the WASH sector

Bathrooms	hygiene bags	sewage suction	Waste Removal	boreholes	Rehabilitation & permanent water sources	water points	Family water tanks capacity 1000 liters	Water for use	Drinking water
16,617 Bathroom	146,420 bag	5,328 sewage	265 site	76 Site	316 source	1,742 Point	47,611 family water tank	121,316 Family	153,545 Family



Emergency recommendations in WACH Sector

Work to find an effective means of obtaining safe drinking water for all IDP camps.

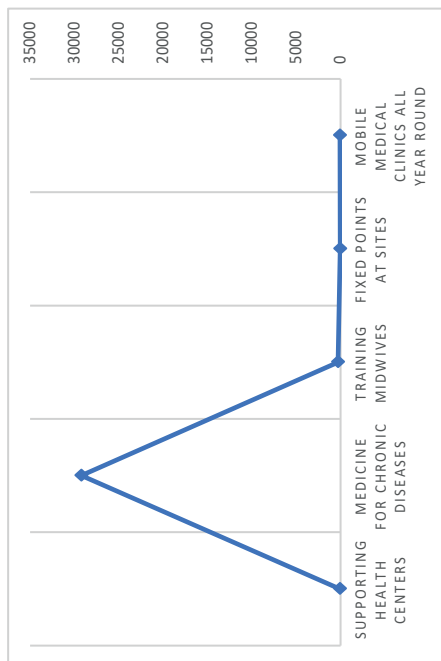
supporting the Public Water Corporation and the Rural Water Authority and providing them with capabilities and technical support.

Rehabilitation and expansion of the main water sources, focusing efforts on sustainable projects, and linking the sites of the displaced to permanent water sources.

Supporting the Office of Cleanliness and Improvement and providing it with the necessary equipment and means to help improve waste hygiene and waste disposal.

Continuing in the two tracks: emergency needs and sustainable needs in the water and environmental sanitation sector.

The importance of finding a project to address the escalating sewage problem in the Marib City.



Emergency needs in the health sector medicine

Emergency needs in the health sector medicine

Supporting health centers	Medicine for chronic diseases	Training Midwives	Fixed points at sites	Mobile medical clinics all year round
86 center	37,530 patient	379 Midwife	50 Medical point	68 Mobile clinic

Emergency recommendations in the health sector

Providing technical and material support to the Health and Population Office in the governorate to increase the effectiveness of existing health facilities, improve their services and supply them with the necessary supplies.

Work to provide health services available and easy to access from the camps and take care of the health of the mother and child.

Establishing a mental and psychological center in the governorate due to the dire need for it.

Establishing a center for burns and cosmetic medicine due to the large number of fire incidents in the camps.

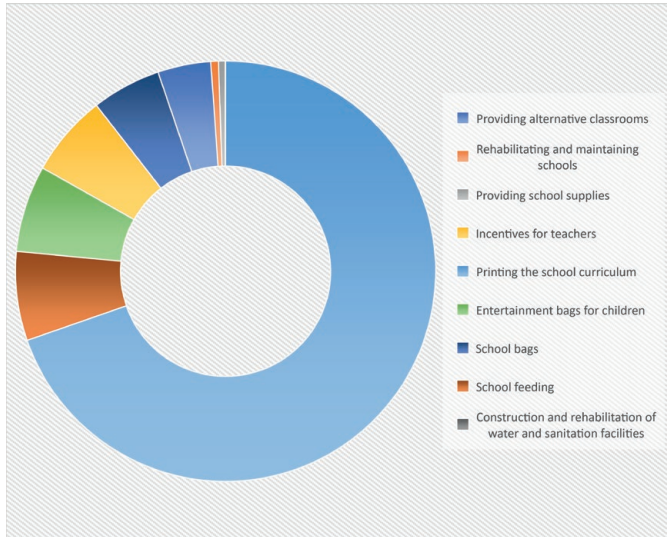
Adopting the provision of urgent assistance for referrals and emergency health cases.

Supporting health centers and facilities to provide permanent services.

Training and qualifying midwives in the displaced sites.



Urgent needs in the Education sector



Urgent needs in the Education sector

Construction and rehabilitation of water and sanitation facilities	School feeding	School bags	Entertainment bags for children	Printing the school curriculum	Incentives for teachers	Providing school supplies	Rehabilitating and maintaining schools	Providing alternative classrooms
461 Facility	190,312 Child	150,865 A bag	7,320 A bag	2,000,400 Books	4,000 Teacher	1,800 Classroom	70 School	700 Classroom



Emergency Recommendations Education Sector

Directing efforts towards finding good and appropriate educational opportunities by supporting the Education Office with the necessary technical capabilities.

Encouraging displaced families to provide their children with education and provide psychological and material support to provide an appropriate learning environment.

Adopting school feeding for children in schools.

Qualifying and training educational cadres, building their professional capacities, and providing financial support to ensure their continuity in the educational process.

Work to establish new schools to keep pace with the large increase in enrollment in public education.



Urgent needs in the protection sector

Urgent needs in the protection sector

Providing a kilo fire-10 extinguisher for camps	Providing a 6 fire extinguisher for the camps	Providing fire suits	Construction of firefighting stations in the camps	Providing fire trucks	Special Needs Support	Training protection Network	Children's case management	Safe spaces for women	dignity bags	Multipurpose cash assistance	Kids friendly space	Legal consulting	Legal documentation	P.P.S	emergency cash assistance	Livelihood Improvement Projects
10,000 fire extinguisher	12,000 fire extinguisher	45 Suit	3 fire station	11 Fire Truck	16,789 Individual	2,263 Member	54,624 Children	24 Space	174,776 a woman	48,317 family	267 Space	17,644 Individual	146,711 Individual	34,756 Individual	65,412 family	32,714 family



Emergency recommendations protection Sector

Activating the work of the Protection cluster in Marib and expanding its interventions and activities in all areas of protection.

Providing adequate technical support to the Civil Status Authority and facilitating the displaced people's access to legal documents.

Focusing on providing psychological, legal and material assistance to the most needy and vulnerable groups in society.

Providing livelihood projects for families that do not have sources of income.



Partners Interventions



Ex.U.IDPs



Shelter



NFIs



WASH



Food Security and Livelihoods



Health



Education



Protection



Nutrition

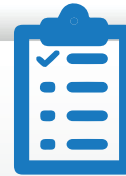
Shelter & NFIs

JANUARY-JUNE
2022



NO.beneficiary Families

18,711
Families



14

No. Projects

Interventions
Details

Shelter, NFI and Winter Bags

Partner

local authority - KSrelief - IOM- UNHCR- NRC - Qatar Red Crescent - Human Access - YFCA -SHS - -BCHR - YDN- Altwasul Foundation- SCR D Ghyoom Foundation

WASH

JANUARY-JUNE
2022



NO.beneficiary Families

133,627
Families



17

No. Projects

Interventions
Details

Drinking water - Using water - Chlorine distribution :
hygiene bags Family tanks - bathrooms - awareness - waste management

Partner

Local Authority - Water & Sanitation Corporation
Rural Water Projects Authority office - Cleanliness and Improvement Office
IOM - International Solidarity - UNICEF - Oxfam - Care International - ACTED
BFD - Humanitarian Access -YFCA - Al'ard Altayiba - Insan Association - CRB
YRFHW - Foundation Ghyoom - Balsam



Food security and livelihoods

JANUARY-JUNE
2022

No. food rations is three
exchange cycles

73,716
families

NO. Beneficiaries

12,536
families



26
No. Projects

Interventions
Details

Monthly food rations - emergency food baskets
ready meals - cash for food
distribution of agricultural seeds.

Partner

KSrelief- IOM – CARE- ICRC - Islamic Relief - NFDHR - Humanitarian Access
Al Badia Foundation – BCHR - Altwasul For Human Development - Alarid Altayiba
Muslim Hands - Horizon - Al-Fhdal Foundation – YDN – YRFHW
AL-hikma AL-yamania for chaity- Insan Foundation
Foundation Ghyoom - Youth Development & Social Foundation- Social Development



Health

JANUARY-JUNE
2022

NO. Beneficiaries

15,785
Individual



11

No. Projects

Interventions
Details

Mobile medical clinics - restoration and expansion of medical :
units - awareness - medical supplies, drug support - construction

Partner

Public Health and Population Office - KSrelief - IOM-MSF
WHO- AIameen - Human Access - Altwasul Foundation
YFCA - BFD

Education

JANUARY-JUNE
2022



NO. Beneficiaries

18,439
Individual



11

No. Projects

Interventions
Details

Details of the interventions: renovating schools
building additional classrooms building schools - temporary classrooms
School bags - school supplies - entertainment bags
incentives and courses for teachers

Partner

Education office - KSrelief - UNICEF - IOM- NRC - MDM
Polish Humanitarian - Human Access-BFD - YDN
Altwasul For Human Development

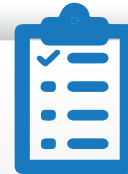


Protection

JANUARY-JUNE
2022

NO. Beneficiaries

17,892
Individual



10

No. Projects

Interventions Details

Legal consultation - Cash assistance - Personal documents – P.P support - Safe spaces- friendly spaces - Economic Empowerment- legal representation- Economic Empowerment legal representation – awareness - advocate for Gender (GVB)- case management Referrals between humanitarian partners

Partner

- Social Affairs - KSrelief – IOM - UNHCR – UNFPA – NRC- Oxfam Human Access Yemen Red Crescent – FMF



Nutrition

JANUARY-JUNE
2022

NO. Beneficiaries

7,594
Individual



4
No. Projects

**Interventions
Details**

**Complementary feeding - therapeutic nutrition -
pregnant nutrition**

Partner

**Office of Public Health and Population – Ksrelief - UNICEF
WFP- MSF -HUMAN ACCESS
BFD- YFCA**

Rapid Response

JANUARY-JUNE
2022



NO. Beneficiaries

12,456
Individual



2

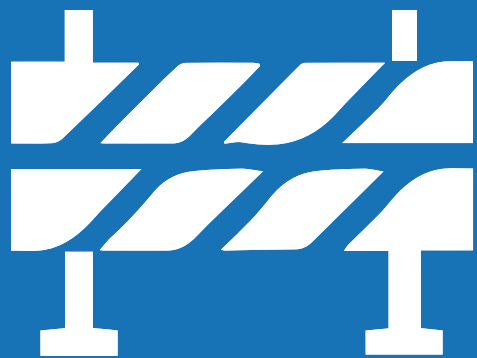
No. Projects

Interventions
Details

RRM - Emergency cash assistance

Partner

UNFPA – IOM – BFD



Challenges





Challenges

Limited resources and capabilities to address the population pressure on limited services.

Not adopting the Marib governorate as an independent humanitarian center in all sectors, financially and administratively, to estimate the level of the large displacement in the governorate.

Weak participation of the competent official offices in planning humanitarian projects in various fields of importance and directing donor funding to projects of the highest priority.

The lack of an operational budget for the Executive unit office in the governorate.

The absence of a reserve stock for emergency interventions to the Executive unit and the clusters in the Marib governorate to face the continuous and intense waves of displacement and the continuous consumption needs in the camps.

Weak response in the sectors of food security, shelter, health, education and protection by international and local partners, compared to the displacement and need in the governorate.

Most of the partner international organizations do not have major branches in the governorate to adopt integrated projects according to needs, which made their interventions limited and meager.

There are no lands designated for the state to house the newly displaced, because the governorate receives displaced people on a continuous basis, and there are camps that have been established in government facilities, and they need urgent treatment to provide alternative places

Procrastination by UN and international organizations in approving the correct figures for the population in the governorate issued by the official offices in the governorate (the Statistics Office - Executive Unit Office - the Planning Office) and receiving information and reports from unofficial bodies.



Recommendations



Recommendations



- 1** The necessity of adopting an independent humanitarian center in Marib in all sectors, financially and administratively with all powers and enjoying attention and activation.
- 2** The importance of international organizations fulfilling their humanitarian responsibilities, and opening offices in the governorate for non-existent organizations, whether from un or international organizations.
- 3** The importance of the presence of the clusters that did not exist in the governorate, especially the protection cluster, and the activation of the existing sub-clusters.
- 4** We hope the government will mobilize efforts and work to provide a reserve stock for emergency interventions to the Executive Unit to confront the continuing waves of displacement.
- 5** Providing technical assistance to the Executive unit and local partners and building their capacities well.
- 6** Participation of specialized offices in planning humanitarian projects in various fields of importance and directing donor funding to projects of the highest priority.
- 7** Adoption of an operational budget for the office of the Executive Unit in Marib Governorate.
- 8** Finding the appropriate mechanism to address the situation of displaced families in service facilities and working to find alternative sites.
- 9** We hope that the government will find lands to build residential cities to accommodate the needy displaced people, as the governorate receives continuous displacement.
- 10** We call upon the International Committee of the Red Cross to enhance its active presence and raise the level of its interventions in the Marib Governorate.



Media supplement for most prominent Activities & Events





The parliamentary delegation's visit to the Executive Unit's office



A meeting with the health sub-cluster in Marib Governorate



Meeting with the delegation from the Presidency of the Executive Unit of Governorate



Coordination meeting with government offices to discuss the humanitarian response plan for the year 2022



A meeting with the team of the organization (Civilians Against Conflict) Civic International



Meeting with world food program



Meeting with the sub-clusters in governorate



Meeting with International Relief Organization



Meeting with IOM team



The meeting of the Marib office with the team of the Malaysian



A meeting with the Director of CARE International in Marib



A meeting with the Polish organization team in Marib



Launching of the Sacrifice Project - Financing of King Salman Center - Implementation of Yamani Foundation for Development



Launching of drilling the well of Samada - the implementation of the



Launching the distribution of cash assistance - cash for food



Launching of Ammar Bin Yasir School in Al Jufaina - Implementation of CRB



Launching of two schools in Jaw Al-Naseem - Idris Al-Badeelah and Idris Al-Mogaila - implemented by Altwasul For Human Development



Opening of the new school - As-Suwayda camp - UNICEF funding



Meeting with the Executive Unit Presidency Team



Meeting with the food sub-cluster in the governorate



Meeting with the governorate shelter sub-cluster



Training course Strengthening the role of women in coordination in the areas of humanitarian work



Training course: Capacity building in the field of writing professional reports



Training workshop: Job performance development for

Conclusion

We are pleased with you, and here we have reached the conclusion of the report. It should be noted that the report was prepared with the efforts of everyone and was prepared to summarize the activities undertaken by the Executive unit in the areas related to its competence. The report contained a brief description of the most prominent performance indicators and briefly reflected the role of the Executive unit during the first half of **2022** .It coordinates and facilitates the delivery of humanitarian aid, fills the basic gaps, and directs the humanitarian response process from partners to the displaced families according to priorities and needs, and in order to highlight this effort to all. The first half worked closely with all humanitarian agencies to support all efforts to address the humanitarian conditions of the displaced.

The report touched on the most important stations and figures that surround the aspect of humanitarian work, in particular in the Marib governorate, and sent a set of challenges and recommendations related to all humanitarian issues in the governorate, which we hope to implement, and we hope that we have succeeded. We are thankful for all the efforts that have been made to accomplish this work, we tell everyone to give more to serve the humanitarian work and stand up to the displacement crisis, its conditions and challenges in the Marib governorate.



Ex.U.IDPs



<https://www.exu-marib.com>



info@exu-marib.com

